



Oxford's Next Generation Lab and Office Space

UP TO 96,695 SQ FT LAB & OFFICE SPACE





Lab-Ready Space for Future-Ready Minds

OXFORD'S FIRST SPECULATIVE 'LAB READY' BUILDING

The Iversen Building is designed by award winning architect Perkins+Will with Lab Ready accommodation available over the three upper floors and extensive parking, loading and laboratory amenity at ground and first floor levels.

The building sits in the heart of the Park, immediately adjoining the proposed station on the Cowley branch line, offering the latest generation of accommodation, designed for scientists, in Oxford.

BASE SPECIFICATION



Building design supports a 70:30 CL2 lab to office ratio on floors 2 and 3 and a 50:50 ratio on floor 4



6 air changes per hour to 70% of floorplate



4.35m slab to slab void



1,600 mm square planning grid for optimum laboratory design



Riser capability for 8 ducted fume hoods per floor



2MVA LV power supply

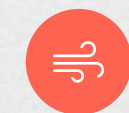


2 x passenger lifts plus 1 x goods lift



Targeting BREEAM "Excellent" & EPC "A"

LAB READY ENHANCEMENTS



On-floor plant room with pre installed air handling plant



Tenant ductwork pre installed for main services



Centralised lab cold water supply available to all areas



Dedicated mechanical riser providing low temperature hot water, chilled water, and domestic water



Capped drainage points in risers and column bases at each occupied floor level



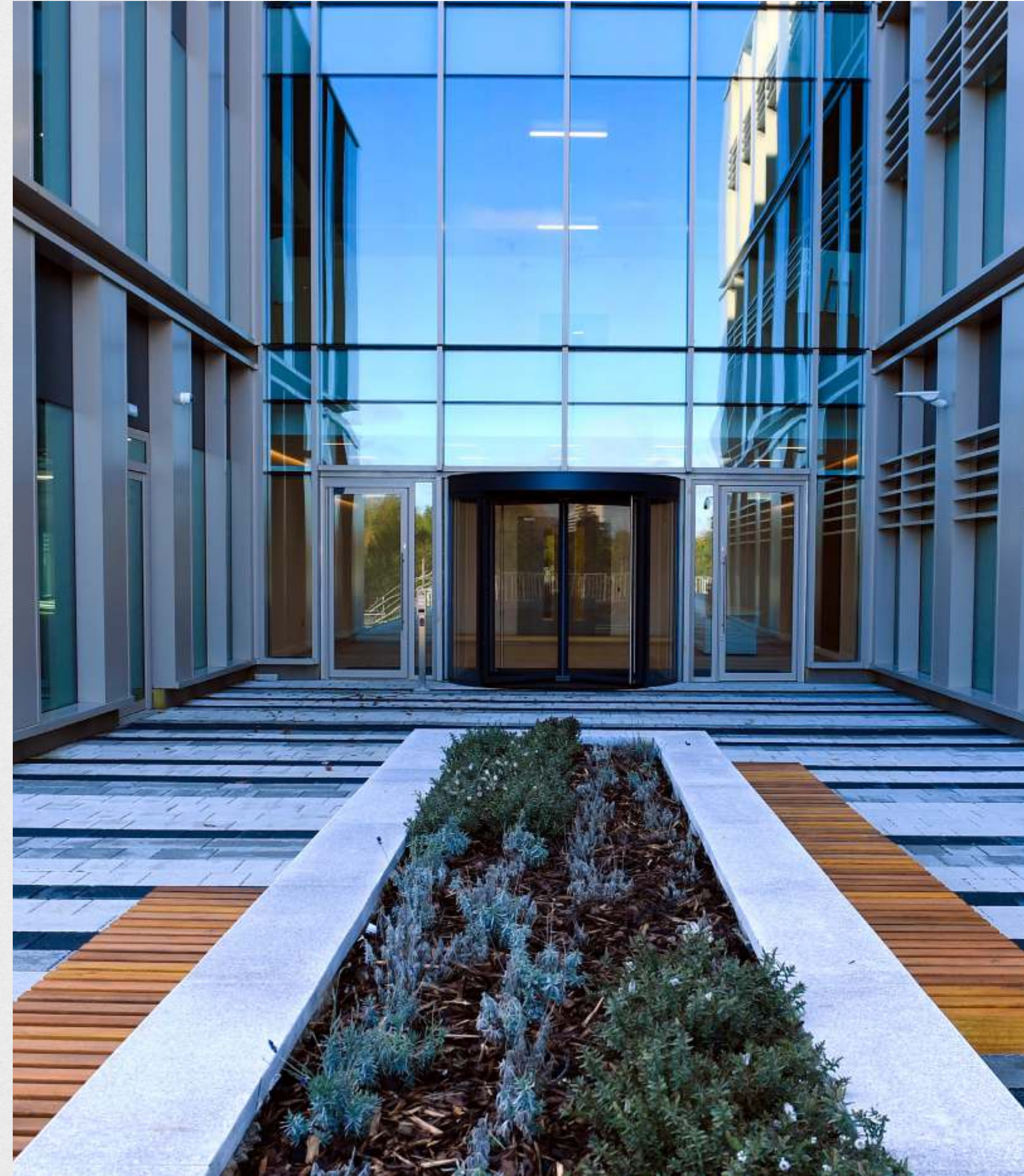
Centralised lab gas and refuse stores



Future essential services back up generation



Power supply to tenant distribution board at floor level



Flexible Workspace, Driving Innovation

96,695 SQ FT (GIA) OF LAB & OFFICE SPACE

The Iversen Building provides 96,695 sq ft (GIA) of flexible, efficient, high specification laboratory and office space available on a floor by floor basis or split floors from approximately 15,000 sq ft upwards.

HANDOVER LAB SPEC

The floors are currently in Shell & Core condition, however the Landlord is prepared to deliver the floors to meet occupier lab requirements, including:

- Fully Fitted
- Cat A
- Shell & Core

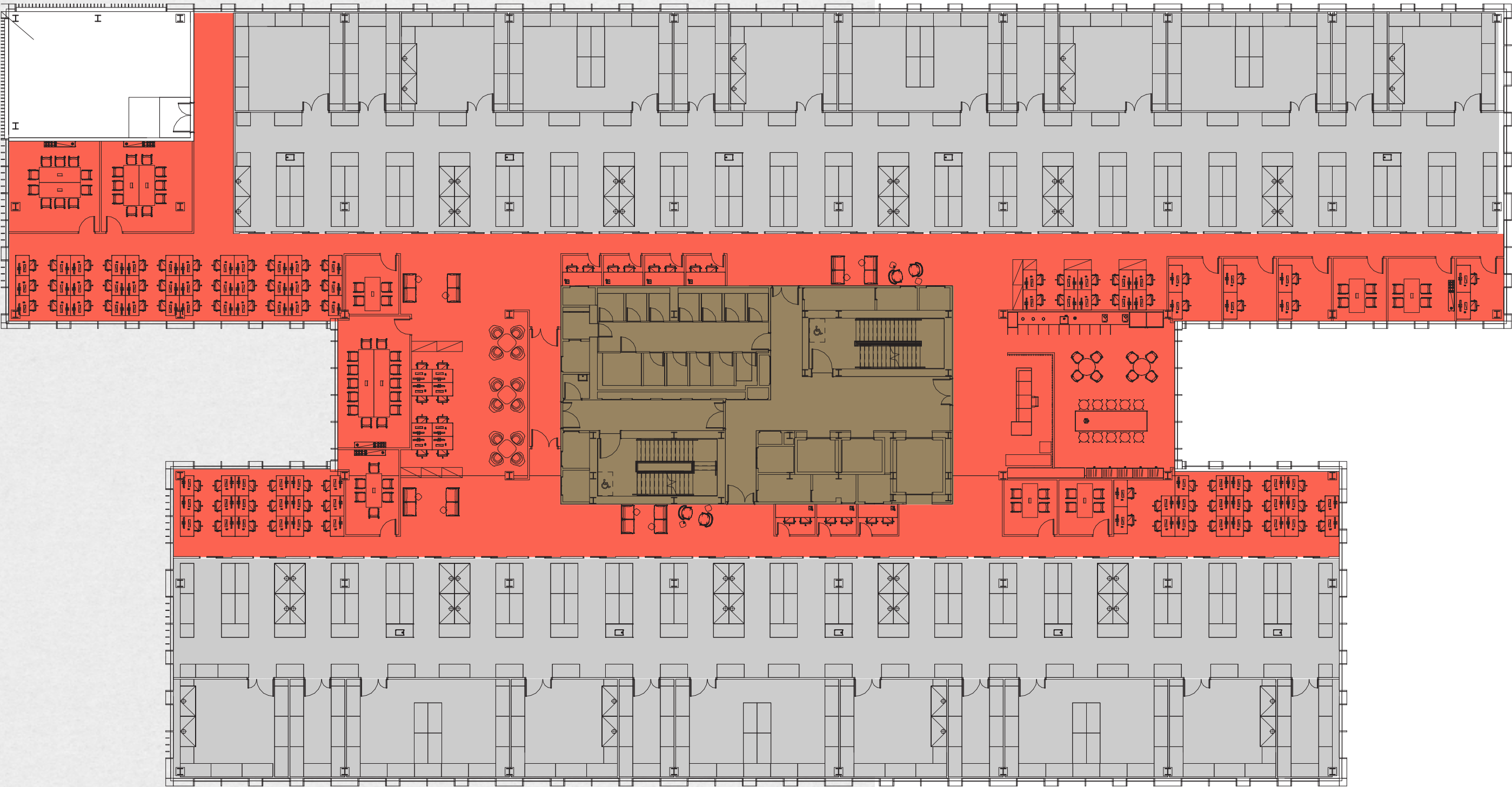
Alternatively the landlord will offer a capital contribution for tenants to undertake their own fit out, subject to terms.

TERMS

Terms upon application, being based on a new effective full repairing and insuring basis.

LEVEL	SQ M	SQ FT
Level 4	2,691	28,967
Level 3	3,217	34,629
Level 2	3,100	33,369
TOTAL	9,008	96,695

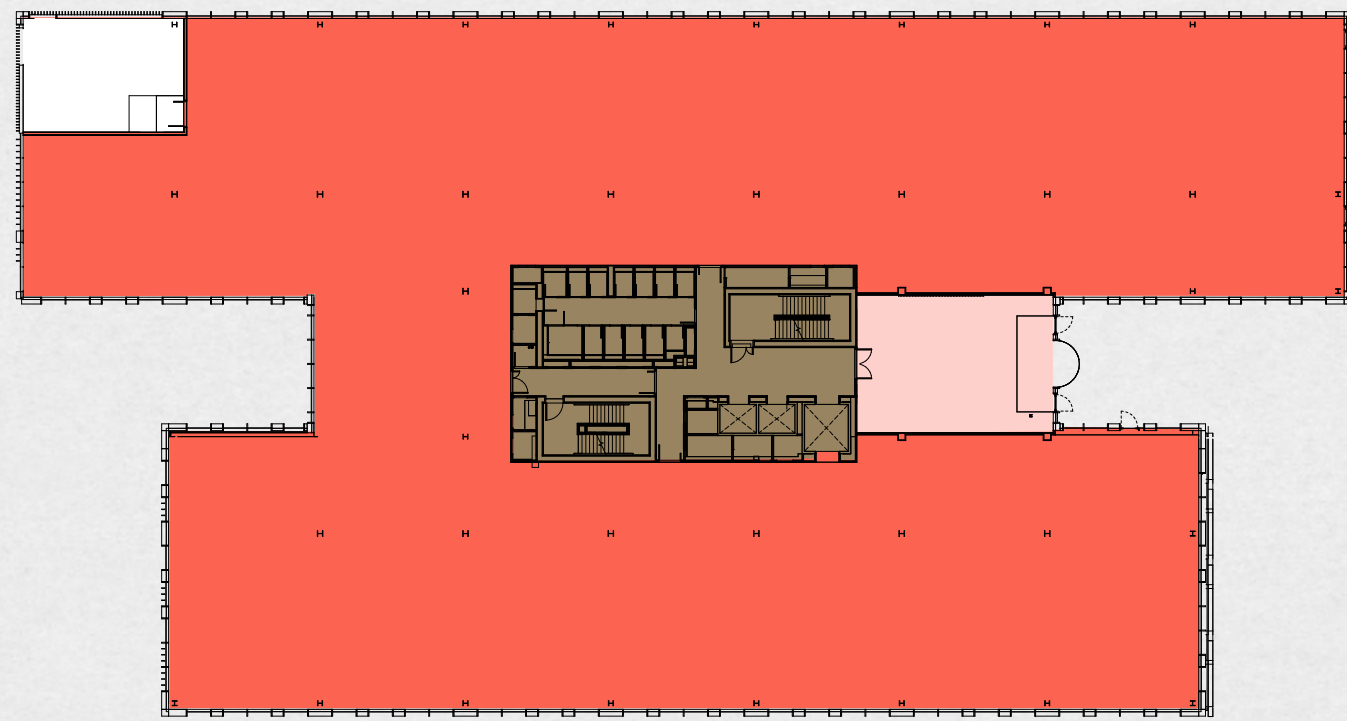
INDICATIVE SPACEPLAN (3RD FLOOR)





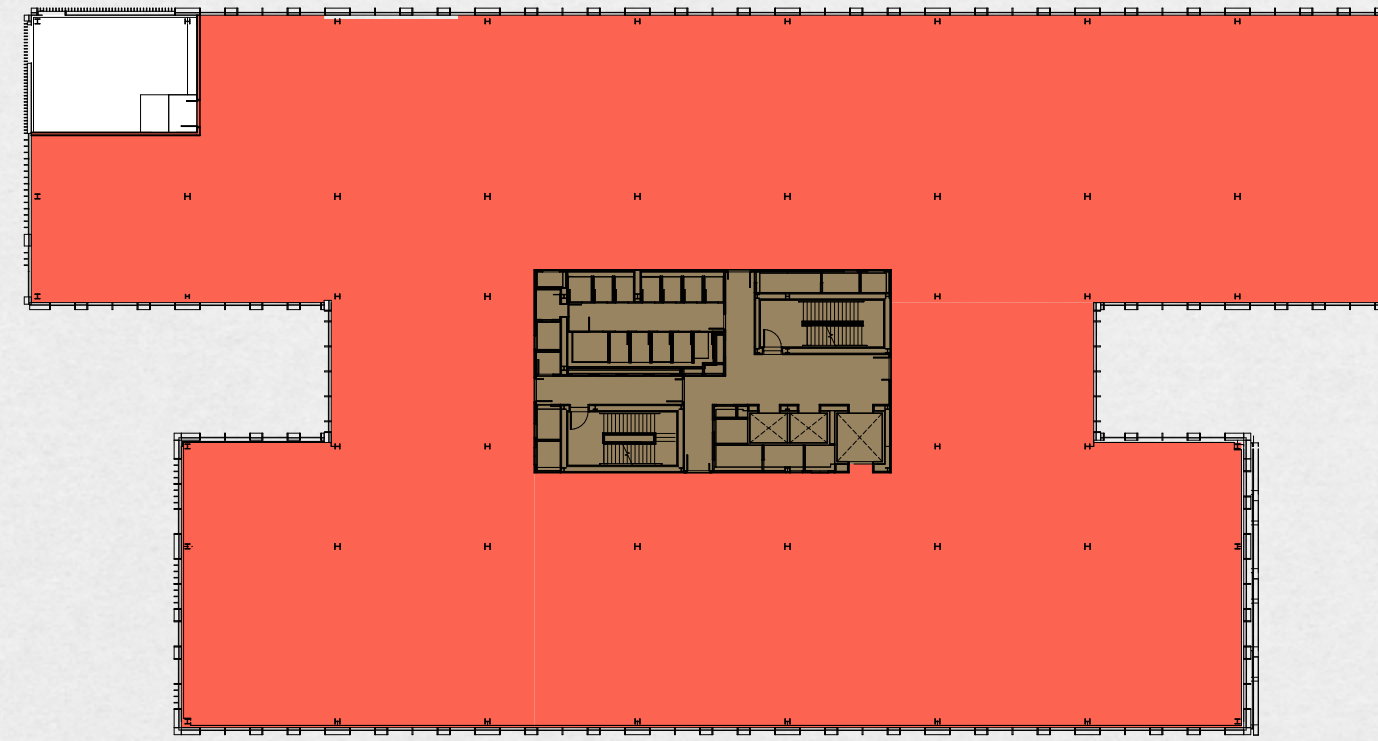
Level 2

33,369 SQ FT | 3,100 SQ M



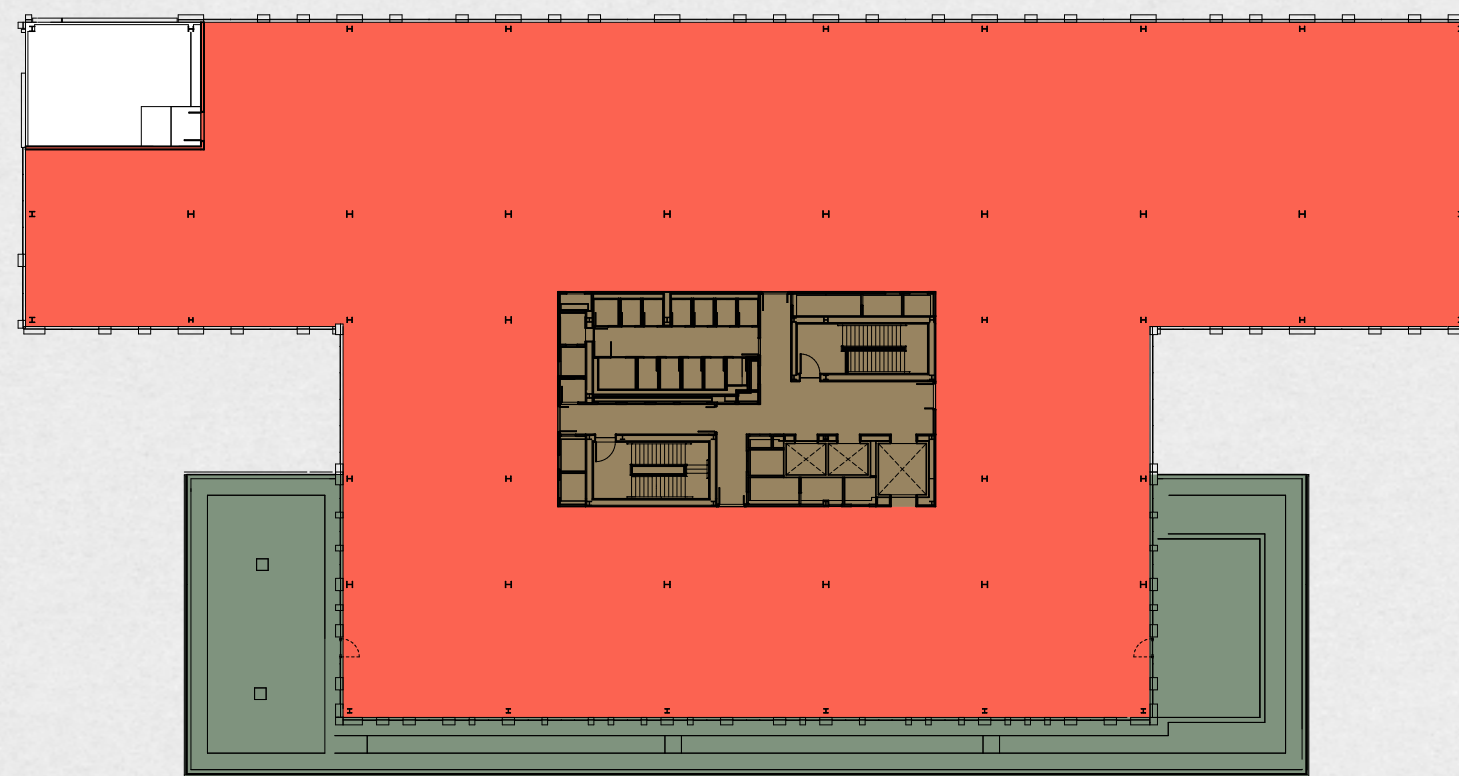
Level 3

34,629 SQ FT | 3,217 SQ M



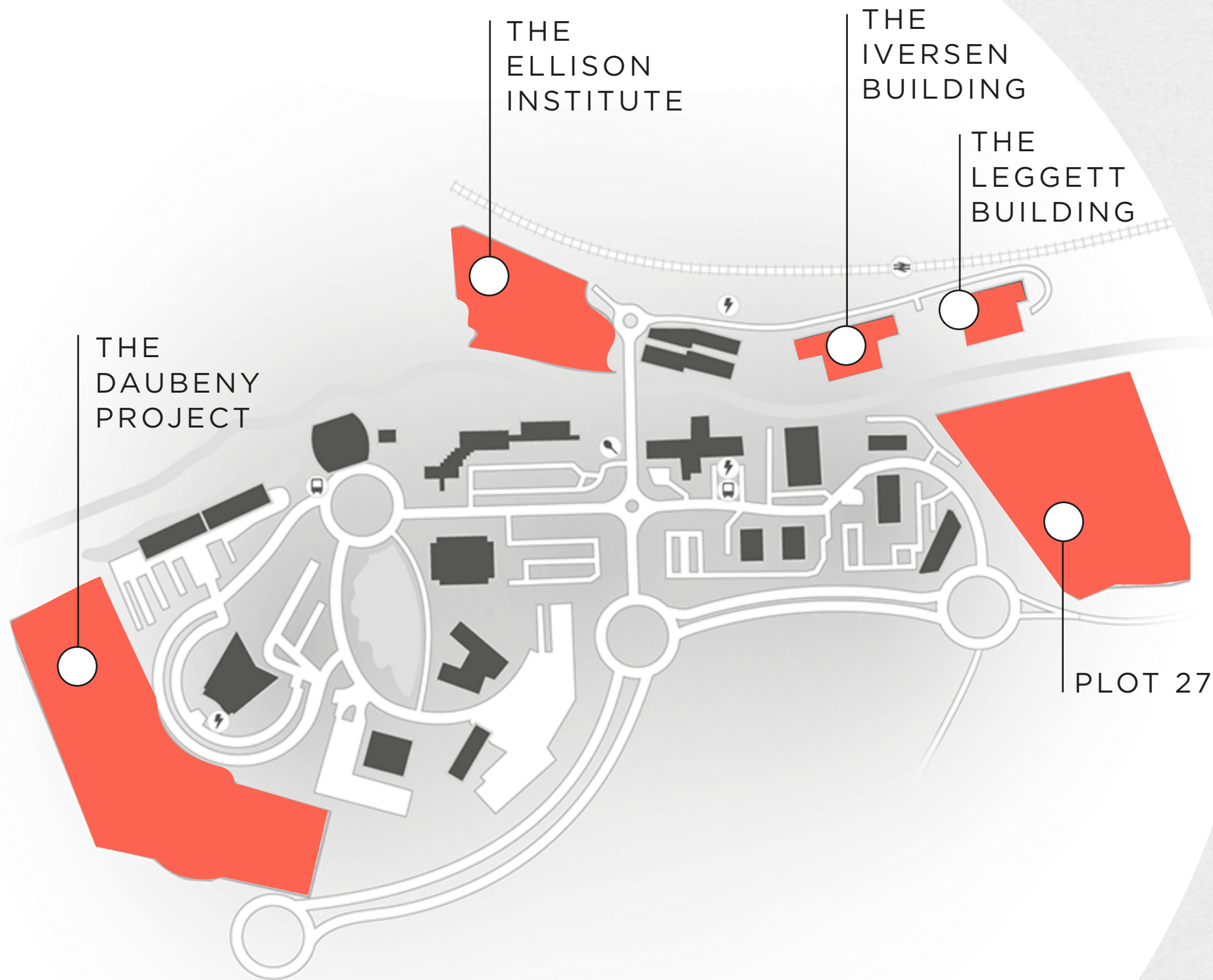
Level 4

28,967 SQ FT | 2,691 SQ M



KEY ● Core ● Reception ● Office & Lab Space ● Plant Room





The Future Happens Here

With a development pipeline of over 600,000 sq ft due to be delivered by the end of 2026, The Oxford Science Park is the ideal home for occupiers to expand.

COMPLETING Q4 2026

The Leggett Building

A 81,372 sq ft four storey office and laboratory building interlinked with The Iversen building with associated terraces, car parking and landscaping.

The Iversen and Leggett buildings will be connected via a podium and central plaza with a link to the proposed new railway station on the Cowley Branch line.



COMPLETING 2026

The Ellison Institute

A new, 323,000 sq ft campus on The Oxford Science Park and adjacent Littlemore Hospital site will provide new research laboratory space, a large oncology and wellness patient clinic, and educational and meeting facilities. It will further the Institute's work on medical science and healthcare, food security and sustainable agriculture, clean energy and climate change, and government policy and economics.



COMPLETING 2025/26

The Daubeny Project

The Daubeny Project is a 450,000 sq ft development of three major R&D buildings. The project is the latest and most ambitious phase of The Oxford Science Park, one of Europe's leading locations for biotech, medtech and technology companies.





An Innovation Ecosystem

THE OXFORD SCIENCE PARK

With close to 100 pioneering organisations, The Oxford Science Park is one of the world's premier innovation ecosystems.

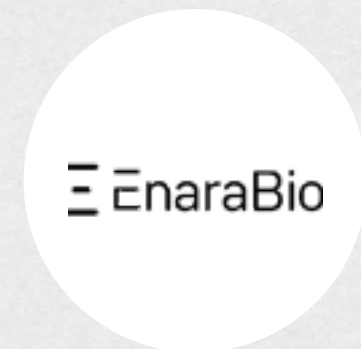
From University of Oxford spin-outs to growth companies tackling metabolic disease, medical device companies and key players in the pandemic response, there's a vast array of expertise at The Oxford Science Park. There's a culture of success too, with occupiers growing their businesses significantly on site and raising millions of pounds in funding – over £2bn since the start of 2020.

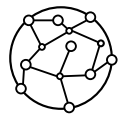


PARK AMENITIES

- THE MAGDALEN CAFÉ
- SADLER VENUE EVENT SPACE
- SADLER BAR & BRASSERIE
- SADLER DELI
- THE OLD STATION NURSERY
- COLLABORATIVE WORKSPACE
- CONFERENCE & MEETING ROOMS
- 70 ACRE LANDSCAPED SITE

PARK OCCUPIERS INCLUDE





Worldwide Links, Global Legacy

THE ICONIC CITY OF OXFORD

As well as Oxfordshire's long-standing reputation for scientific leadership and expertise, the City of Oxford's iconic architecture, vibrant culture and picturesque countryside makes it a professional destination where bright minds also find a rewarding lifestyle.

Plans for a new train station directly adjacent to the Iversen Building providing access to London Marylebone in c.1hr are advancing with services due to commence in 2026.



10-15 MINUTE WALK

- The Park Club Oxford leisure centre
- Bowlplex ten pin bowling
- VUE multiplex cinema
- Oxford Kassam Stadium & event venue
- Holiday Inn Express Hotel
- Hampton by Hilton Hotel
- Voco Oxford Thames Hotel & Spa

10-15 MINUTE DRIVE

- Sainsbury's superstore, pharmacy and petrol station
- Oxford Retail Park
- The Mole Inn
- Voco Oxford Spires Hotel
- Premier Inn
- Le Manoir aux Quat'Saisons
- University Medical Science Campus



BY BUS

Oxford City Centre
23 mins

Oxford Train Station
36mins



BY CAR

Oxford University
10mins

John Radcliffe Hospital
12mins

Oxford Train Station
15mins

Heathrow
50mins

London
1hr 32mins

Cambridge
1hr 55mins



BY PLANE

Paris
1hr 20mins

Basel
1hr 45mins

Munich
1hr 50mins

Boston
7hr 30mins

San Diego
11hr 10mins

Beijing
12hr 55mins

Tokyo
13hr 35mins



Get in Touch

PLEASE CONTACT THE JOINT AGENTS:



Carter Jonas

Jamie Renison
+44 (0) 7778 052 594
jamie.renison@cushwake.com

Harry Blanshard
+44 (0) 7385 950 543
harry.blanshard@cushwake.com

Ellie Collett
+44 (0) 7825 864 024
ellie.collett@cushwake.com

Jon Silversides
+44 (0) 7720 537 141
jon.silversides@carterjonas.co.uk

Scott Harkness
+44 (0) 7860 360 821
scott.harkness@carterjonas.co.uk

Matt Lee
+44 (0) 7815 469 115
matt.lee@carterjonas.co.uk

Carter Jonas and Cushman & Wakefield have made every attempt to ensure that the particulars and other information provided are as accurate as possible and are not intended to amount to advice on which you should rely as being factually accurate. Any measurements and distances given are approximate only. Although we make reasonable efforts to update our information, neither Carter Jonas LLP, Cushman Wakefield nor anyone in its employment or acting on its behalf makes any representations warranties or guarantees, whether express or implied, in relation to the property, or that the content in these particulars is accurate, complete or up to date. November 2023.

Designed by [Studio185.london](https://www.studio185.com/)

